

Available Products

Griffin Foam Board (White Color)
 SIZE - 8' X 4'
 THICKNESS (mm) - 6, 8, 10, 12, 15, 18

Applications | Pantry Cupboard | Furniture Manufacturing | Building Partitioning

Griffin Lamination Board - Wall Cladding - SIZE - 8'X 4'
 THICKNESS (mm) - 6

Ceiling - SIZE - 8'X4' | 2'X 2' | 4'X4'



Griffin Deco Board - Wall Cladding - SIZE - 8'X 4'
 THICKNESS (mm) - 6

Ceiling - SIZE - 2'X 2' | 4'X4'



Compatible to



Completed Projects



- 📍 752/1, Dr. Danister De Silva Mawatha, Colombo 09, Sri Lanka.
- ☎ +94 112 680 600 / +94 77 867 6728
- ✉ support-innovation@anton.lk
- 🌐 www.griffin.lk / www.anton.lk

Authorized Dealer



by GRIFFIN



Customization beyond it's limits





Imaginative Pantries



Ceiling & Wall worth looking up to



Elegant Bathrooms

About Us

A part of St. Anthony's Industries Group, Anton strives to improve and impact the Sri Lankan way of life through its products and services. Its latest Griffin Product Range is an eco-friendly alternative to wall tiles that are easier to use with more value benefits to users. As an eco-friendly finishing products, Griffin will always guarantee the quality and durability of its products. Customers will have to use them to feel the difference and benefit from the value they provide. Griffin board made from light weight PVC using a celuka manufacturing process at Anton's State of the art factory. Griffin will provide an innovative alternative to many finishing applications such as outdoor advertising, furniture fabrication, Interior designing, construction and many more applications.

Product Features



TERMITE PROOF



SOUND & ENERGY INSULATED



EXCELLENT FASTENING



V-0 FIRE RATED



RECYCLE



WATER PROOF



LIGHT WEIGHT



ECO FRIENDLY



EASY TO CLEAN AND MAINTAIN



NO NEED PLASTERING

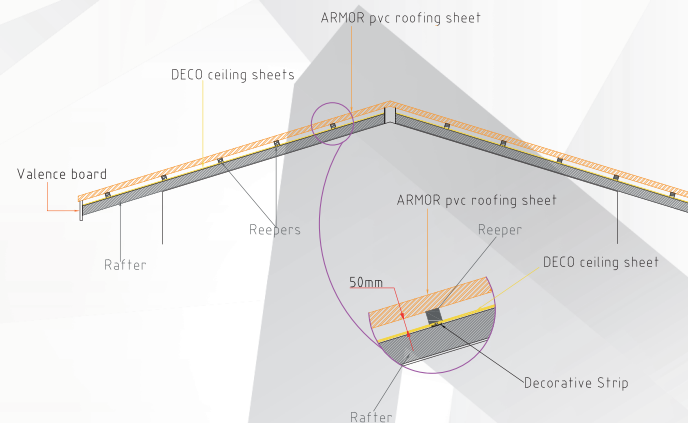


LOW INSTALLATION COST



DURABILITY

Ceiling Installation Guide - Finishing Roof



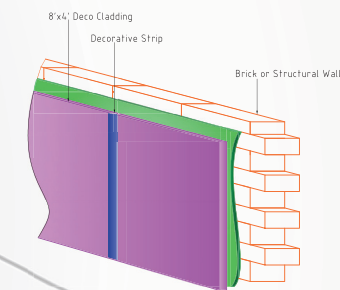
- Rafter expand should be 02 Ft (24 inch).
- Purlin (Reepa) Height - The minimum distance between roof and ceiling should be 50mm.

Installation Guide - Hanging / Flat Ceiling

- Use Griffin 2 x 2 Deco Board for flat ceiling.
- GI Channel should be fix within 2 Ft gap .

Installation Guide - Wall Cladding

8'x4' DECO Cladding



- Apply thin glue layer to Deco board and paste it to the wall.
- Use decorative strips for the separation.

Technical Values

DIMENSIONAL TOLERANCES

THICKNESS	mm	+/- [S x 0.05 + 0.1]
TO CALCULATE		THICKNESS IN mm x 0.05 + 0.1
THICKNESS VARIATION PER SHEET		Total Tolerance for thickness in mm x 0.25
LENGTH	mm	-0, +10
WIDTH	mm	-0, +5
DEVIATION BETWEEN DIAGONALS	mm	≤5
WARPAGE	mm	≤ 10